

**RELEASE OF  
GCE 'N' LEVEL RESULTS  
18 DECEMBER 2023 (MONDAY)  
2:00 PM**



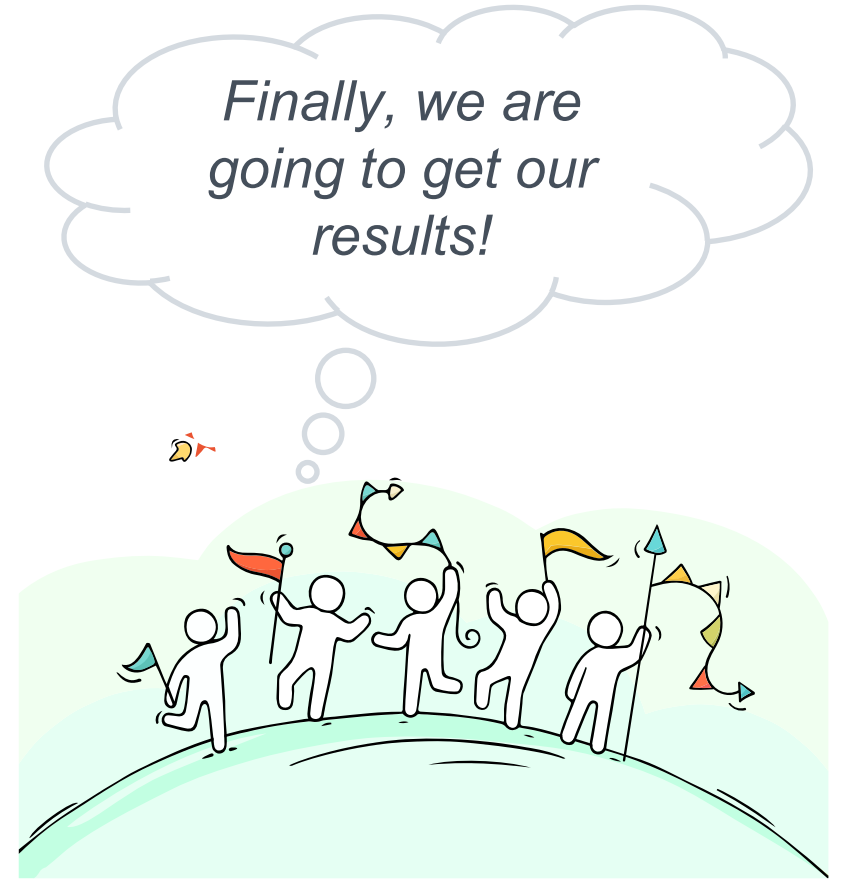
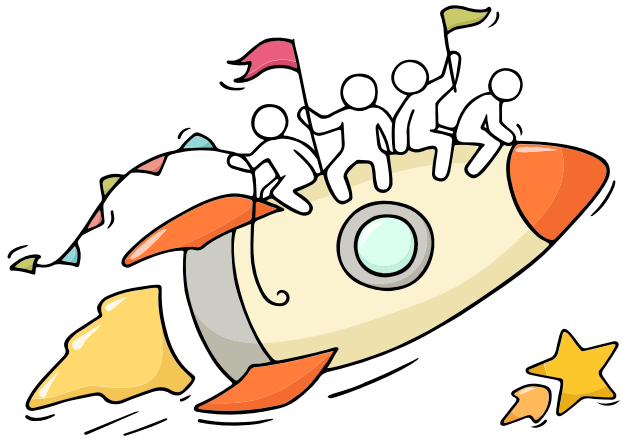
**PEIKAI SECONDARY SCHOOL**

*We Make the Difference*

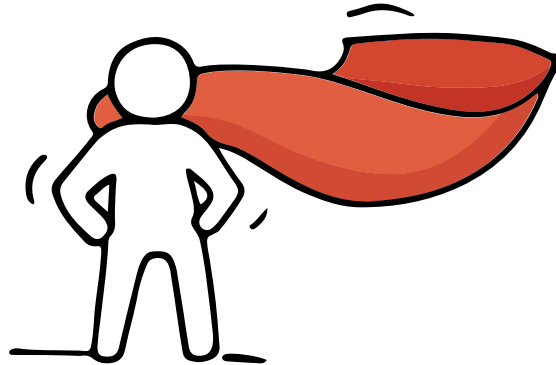
---

# Dear students,

You have worked hard to reach this stage. Let's celebrate your efforts!



Remember that while **everyone's educational journey is different,**  
**we can each have a fulfilling outcome!**



# Thinking about Your Next Step?

Consider these questions!

Where do I want to go?



Who am I?

How Do  
I Get There?

# Resources to help you make informed decisions



## MySkillsFuture Student Portal

**A one-stop portal that empowers you to embark on a journey of self-discovery and make informed education and career choices.**

**Use the information and tools to explore various education and career pathways and take charge of your future.**

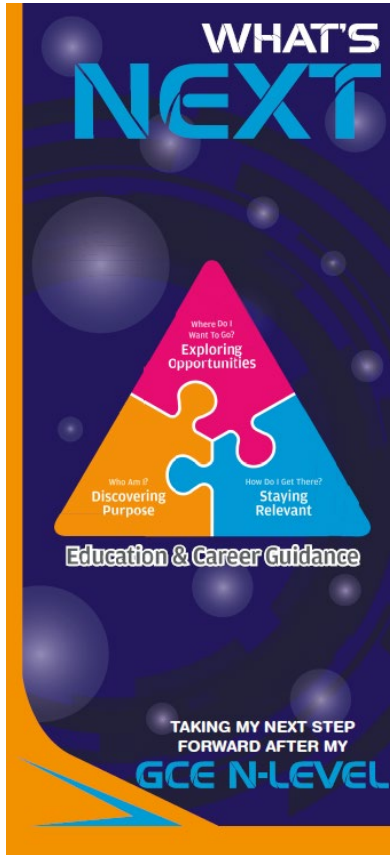
*Where can we  
find more  
information?*



<https://go.gov.sg/mySFsec>



# Resources to help you make informed decisions



<https://go.gov.sg/whats-next-nlevel>

<https://go.gov.sg/whats-next-nlevel>

# Resources to help you make informed decisions

## Post-Secondary Education

Learn more about the admissions exercises and programmes



<https://moe.gov.sg/post-secondary/admissions>

Learn more about the post-secondary education institutions



<https://moe.gov.sg/post-secondary/overview>

# Resources to help you make informed decisions

Explore different jobs and industries with On My Way (OMW). Find out if your career goal and educational pathway match your interests, values and ambitions. <https://www.nyc.gov.sg/omw/home>



**KNOW IT ALL**  
provides consolidated information about different jobs and industries - key responsibilities, skills, career paths and more!



**A Day in the Life of a Food Technologist**

**DAY IN THE LIFE**  
takes you into the lives of different professionals and give you a glimpse of their jobs and what it entails through the medium of videos.

A micro-job taster experience by Bold@Work x Outward Bound Singapore

### Where Outdoors is a Calling

Curious to sample an alternative career transforming lives and journeying alongside youths in the outdoors? Discover skills, roles, culture, career opportunities and pathways within Outward Bound Singapore in this intentionally curated half-day session, before you decide if you'd like to commit to the Instruction Selection Process.

**8 Nov 2023**  
**8AM to 1 PM**

Punggol Point Jetty  
Singapore 828684  
085 Camp 3, Pulau Ubin

Co-organised by   NYC



**TASTER PROGRAMMES**  
are micro-experiences of different job roles that allow you to get a taste of working life and help you decide what to study to achieve your career aspirations!





# Resources to help you make informed decisions

## Additional Resources

- **JIE Booklet**
- **Understanding JIE**  
<https://www.moe.gov.sg/post-secondary/admissions/jie>
- **ITE Prospectus**  
<https://www.ite.edu.sg/admissions/prospectus>
- **Which admission exercises am I eligible for?**  
<https://www.ite.edu.sg/admissions/full-time-courses>

# Concerned about your next steps?

Stop

- Calm yourself down. Take a few deep breaths.

Think

- Think through the different options that are available for you. Keep things in perspective.
- Remember that the N-Level is one part of your life journey and not the destination.

Do

- Approach a trusted adult and seek his/her help. Have a conversation with this person about what would be best for you.
- Make a decision and take action based on your options.

When you receive your results, you may experience a range of emotions.

Managing these emotions well will allow you to stay calm and make rational decisions.

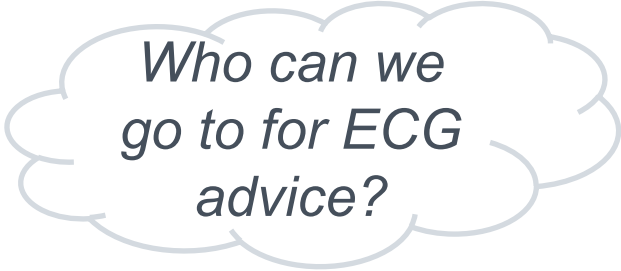
# Reaching out for help is a sign of strength, not weakness.

If you have any questions about your options or are not coping well, do reach out to someone you trust and speak with them. It could be a parent/guardian, teacher, ECG Counsellor, School Counsellor or a friend that you can talk to.

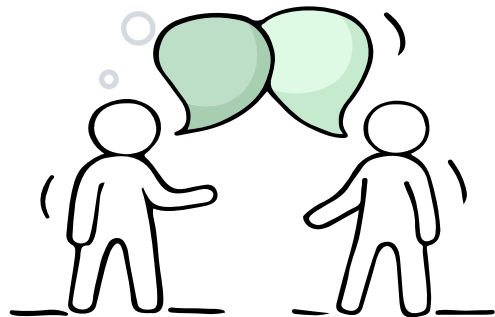


# Support is readily available for you.

## Reach out to an ECG Counsellor!



*Who can we  
go to for ECG  
advice?*



Consult your Form Teachers

**OR**

Make an appointment to speak with  
school's ECG Counsellor at

[https://cal.gov.sg/pqemp1y43nbjxcgk55  
x136rw](https://cal.gov.sg/pqemp1y43nbjxcgk55x136rw)

**OR**

Make an ECG counselling appointment  
via the

ECG Centre @ MOE (Grange Road) at  
<https://go.gov.sg/moe-ecg-centre>



<https://go.gov.sg/moe-ecg>

# Support is readily available for you.

## **COURSE CONSULTATION @ ITE**

### **ITE Headquarters & ITE College Central**

Tel: 1800 222 2111 / 6590 2211

Email: [training@ite.edu.sg](mailto:training@ite.edu.sg) or [college\\_central@ite.edu.sg](mailto:college_central@ite.edu.sg)

### **ITE College East**

Tel: 6590 2262

Email: [college\\_east@ite.edu.sg](mailto:college_east@ite.edu.sg)

### **ITE College West**

Tel: 6590 2628

Email: [college\\_west@ite.edu.sg](mailto:college_west@ite.edu.sg)

# Keep a lookout for some of these signs in your peers or in yourself

*How can we support one another?*



**D**

Deliberately avoiding others

**I**

Increased irritability, restlessness, agitation, stress and anxiety

**S**

Sending or posting moody messages on social media

**T**

Talking about death or dying

**R**

Reacting differently or gradually losing interest in things they used to like

**E**

Eating more than usual or having a much reduced appetite

**S**

Sleep pattern changes with difficulty falling asleep or oversleeping

**S**

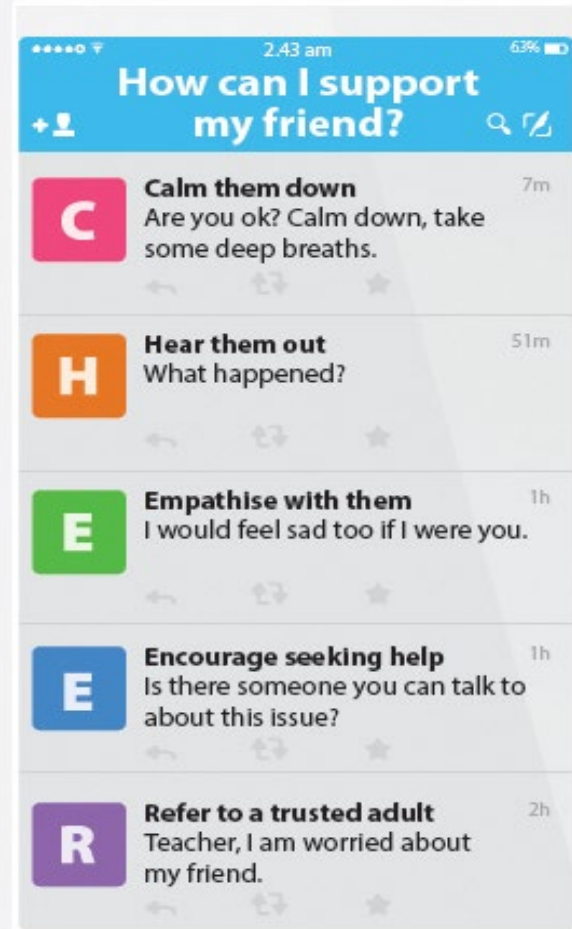
Slowing down of energy levels

If you notice any of these signs in yourself or your friends,  
**have a chat with your school counsellor or teacher**  
Or contact SOS 24-hour hotline at **1-767** or **1800-221-4444**

Keep a lookout for your friends in distress. You can support them in the

# Supporting Your Friend

We may each experience different emotions upon receiving the results. You can share your friends' joy by congratulating them or give words of encouragement to friends who may be disappointed with their results.









**The N-Level  
examination is not  
the destination.**

**It is part of your  
education journey.**

# Admissions Exercises Application Timeline

(N-Level Results)

Dec

- JIE 'N'
- JIE 'E'
- DPP
- NFP

(Start of 2-year *NITEC* and  
3-year *Higher Nitec*)

Jan

- PFP
- DPP  
(2<sup>nd</sup> window of applications)

(Start of Polytechnic  
and 2-year *Higher  
Nitec Term*)

Apr

- ..... N(T)-Level Student
- ..... N(A)-Level Student

1.

# Administrative Briefing



# Information for 4NA

You will be given the following:

- Results slip
- N level Certificate
- 1 copy of Form N
- 1 copy of ITE's Admission and Traineeship Booklet with scholarship brochure inserted
- 1 copy of Direct Entry Scheme to Polytechnic Programme brochure (for NA students only)
- Indication of Progression to Sec 5NA Form (for NA students who opt to be in S5NA, including those intending to apply for PFP and waiting for DPP confirmation)



# Information for 4NT

You will be given the following:

- Results slip
- N level Certificate
- 1 copy of Form N
- 1 copy of ITE's Admission and Traineeship Booklet with scholarship brochure inserted
- 1 copy of e-NFP Invitation Letter for school leaver for student (for students with 0 or 1 Pass)
- 1 copy of e-NFP Invitation Letter for parent/guardian in multiple languages (for students with 0 or 1 Pass)

# Important Dates

## JIE 'N' & JIE 'E'

- Application\* : **18 Dec 2023 (2.30pm) to 21 Dec 2023 (5pm)**
- Release of results: **29 Dec 2023 (from 9am)**
- Students have until **3 Jan 2024, 11.59pm**, to accept or reject the offer.

***\* For courses offered under Aptitude-Based Admissions, students may check the interview details online via the ITE application portal from 2.00pm on Friday, 22 December 2023***

## JIE 'H' (DPP)

- Application : **18 Dec 2023 (2.30pm) to 21 Dec 2023 (5pm)**
- Release of results: **22 Dec 2023 (from 2pm)**
- Students have until **27 Dec 2023, 11.59pm**, to accept the offer or appeal.



# 2.

## Appeal for Review of Results



# Procedure for Appeal of Results

---

- Please approach Ms Lam Jie Ying  
**or** General Office (to make payment)
- Individual Appeal Cost Per Subject : **\$112.35** for SC & **\$113.40** for SPR / IS (inclusive of 7% GST)
- Deadline for submission of Appeal:  
**22 December 2023** (Friday) by 12pm





# 3.

## ITE Full-Time and Traineeship Courses



# Key Pointers for Students on ITE's Joint Intake Exercise (JIE) for Admission to Nitec Courses

All N(T) students and N(A) students (who are not progressing to 5N(A) or repeating 4N(A)) are eligible for JIE.

Keen competition for Nitec courses, so use all 12 choices wisely!

Participation in Main Phase is key to secure a place in ITE!

If you are keen in the work & learn option, you may consider applying for the ITE Traineeship programme. Do apply in the Main Phase to avoid missing a place in ITE!

If you are unsuccessful in EAE, make sure you apply in Main Phase to avoid missing a place!

If you have received an additional letter, then you are eligible for the 3-year Nitec Programme (eNFP).

If you are eligible for eNFP, make sure you apply for the 2-year Nitec first before applying for eNFP!

The eNFP helps to build the necessary literacy and numeracy foundations that will enable you to successfully complete your Nitec course!

If you are counter-offered a course, accept it first before appealing to another course you may be more interested in!

# Key Dates for Jan 2024 Intake Exercise

Key Activity	Key Dates	Remarks
<b>Application</b>	18 Dec 2023 (Mon) 2.30pm to 21 Dec 2023 (Thu) 5pm	Apply through the Internet at <a href="https://www.ite.edu.sg/apply-for-ITE-courses">https://www.ite.edu.sg/apply-for-ITE-courses</a> with NRIC / FIN and Date of Birth. You may also apply using SingPass.
<b>Release of Results</b>	29 Dec 2023 (Fri) from 9am	Check results at <a href="https://istudent.ite.edu.sg">https://istudent.ite.edu.sg</a> with web ID and password
<b>Acceptance of Course Offer Period</b>	29 Dec 2023 (Fri) to 3 Jan 2024 (Wed)	Accept course offer at <a href="https://istudent.ite.edu.sg">https://istudent.ite.edu.sg</a> with web ID and password

# Important Notes

---

- There is keen competition for places in ITE Nitec.
- Not participating in the Application Phase reduces a student's likelihood of gaining a place in ITE.
- Students keen to apply for the **Traineeship Scheme** should also be reminded to concurrently participate in the Application phase to avoid missing out a place in ITE altogether.


## STEP-BY-STEP INFORMATION FOR JIE APPLICATION


# Online Application for


2-Year *Nitec* Courses

3-Year *Nitec* Course with eNFP  
(for N(T) courses with 0, 1 pass)

1. Go to <https://www.ite.edu.sg>.

2. Click  icon.

3. Under JIE 'N', click  icon to link to the application website

Under JIE 'E', click  icon to link to the application website

4. At the application website:

- Enter NRIC / FIN and Date of Birth to start application.
- Upon completion of application, applicants will receive their **web ID** and password.

\*Students who are eligible for the 3-Year *Nitec* Course with eNFP are encouraged to go through **both** JIE 'E' and JIE 'N' e-application process



# Checking of Posting Results/Accept Course Offer

## STEP-BY-STEP INFORMATION FOR JIE APPLICATION

2-Year *Nitec* Courses

3-Year *Nitec* Course with eNFP  
(for N(T) courses with 0, 1 pass)

1. Go to <https://istudent.ite.edu.sg>.
2. Enter **web ID** and password.
3. Click '**Self-Service**' followed by '**Student Admission**' followed by '**View Application Results**' to view the application results and to accept course offer.



# 4.

## Early Admissions Exercise (EAE) Jan 2024 Intake



# Important to note

---

- Students with confirmed ITE EAE offers are expected to honour your EAE offers.
- You are **not allowed** to apply for Nitec courses or 3-year Higher Nitec courses at the Joint Intake Exercise (JIE).
- However, you can still apply for the Direct-Entry-Scheme to Polytechnic Programme (DPP) after the release of the GCE 'N' Level results, or Polytechnic Foundation Programme (PFP) after the release of the GCE 'O' Level results, if you qualify.



# Important to note

---

- ITE will be contacting students about the status of your ITE EAE offers via (i) mobile phones or (ii) electronic mail.
- However, in the event that you do not receive the updates from ITE due to unforeseen circumstances (e.g. mobile number has changed since ITE EAE application), you will still be able to check-in with the school on your ITE EAE offer status.
- Please see Ms Daphne Lim or Ms Lam Jie Ying if you have any questions about this.

# 5.

## Direct-entry-scheme to Polytechnic Programme (DPP) Jan 2024 Intake



# Application for DPP

- Students eligible for the DPP will receive a copy of Form N from the school, inviting you to apply for the DPP.

Application	18 Dec 23 (Mon) 2.30pm – 21 Dec 23 (Thu) 5pm	
Release of results	22 Dec 23 (Fri) 2pm	Check online via ITE application portal
Accept / Reject	22 Dec 23 (Fri) 2pm – 27 Dec 23 (Wed) 11.59pm	Accept / Reject via ITE application portal

- Students who do not have a confirmed place in the DPP should submit **Indication of Progression to Sec 5NA Form** by 28 Dec 2023, 9am, to the General Office and report to Peicai Secondary on 02 Jan 2024 for Secondary 5.

# 6.

## Polytechnic Foundation Programme Jan 2024 Intake



PEIKAI SECONDARY SCHOOL

*We Make the Difference*

# Information

---

- School candidates interested in applying for the PFP should submit **Indication of Progression to Sec 5NA Form** by 28 Dec 2023, 9am, to the General Office and report to Peicai Secondary on 02 Jan 2024 for Secondary 5 first, while awaiting notification of eligibility and confirmation of a place in the PFP.
- Applications for the PFP will open in January 2024, on the day of the GCE Ordinary Level Examinations results release.
- If you are eligible for the PFP, you will receive a copy of Form P on the day of the release of the O-Level examination results, inviting you to apply for the PFP.

# Further Information on PFP

---

- For more information on the DPP and the PFP, please visit these **websites**:
  - Direct-Entry-Scheme to Polytechnic Programme (**DPP**)  
<http://www.ite.edu.sg/wps/portal/definitely-des/>
  - Polytechnic Foundation Programme (**PFP**)  
<https://pfp.polytechnic.edu.sg/PFP/index.html>

# 7.

## Other Information



# Student who have met the eligibility criteria and would like to progress to Sec 5NA

---

- To submit Indication for Progression to Sec 5NA Form by 28 Dec 2023, 9am, to the General Office.
- Collect the Sec 5N booklist (from General Office) and purchase the relevant books.
- Report to school Tuesday 2 Jan 2024 in proper school attire and neat appearance.





# IT Access

---

- Students who need access to laptops/computer for your registration, please inform your FT.



# Grade Conversion Table

(for Progression to Sec 5N)

School O-Level Prelim		N(A)-Level	
Mark	Grade	Mark	Grade
65-100	A1, A2, B3	75-100	1
50-64	B4, C5, C6	70-74	2
45-49	D7	65-69	3
40-44	E8	60-64	4
0-39	9	50-59	5
		0-49	6

# Grade Conversion Table

## Computation of ITE Aggregate Points for N(T) subjects


<b>N(T) Grades</b>	<b>ITE Aggregate Points</b>
A	1
B	2
C	3
D	4
U	5

## Computation of ITE Aggregate Points for N(A) subjects

<b>N(A) Grades</b>	<b>ITE Aggregate Points</b>
1,2	1
3	2
4	3
5	4
U	5

# Collection of SGC

- Please note that you will receive a text message from your Form teachers when the SGC is ready for collection which will generally be in the month of **Feb/Mar for 4NT and Apr/May for 4NA.**
- Things to note when collecting your SGC:
  1. Please sign in at the guard post.
  2. Report to general office and inform the front desk that you are collecting your SGC.
  3. The front desk staff will get you to acknowledge that you have collected the SGC.
  4. You are reminded to dress appropriately when entering the school compound.
  5. You are not allowed to loiter around the school compound. Kindly leave the school after collection.



Success is not final,  
Failure is not fatal;  
It is the courage to  
continue that counts.

Winston Churchill

**All the very best  
in your next lap!**

